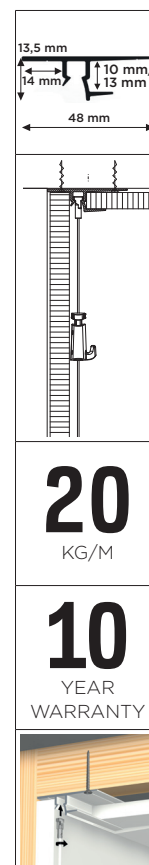


CEILING SYSTEMS - INTEGRATED (IN COMBINATION WITH DRYWALL)

# SHADOWLINE

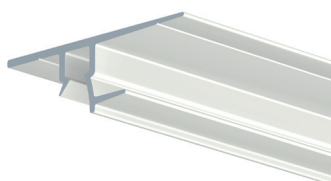
DRYWALL - FIXATION DRYWALL



## Hanging rail for plasterboard ceilings and walls (drywall)

The Shadowline rail - drywall enables the placement of an invisible picture hanging system between plasterboard walls and ceiling panels. A discreet shadow line is the only element that appears between the wall and ceiling, and this is where the flexible picture hanging system is hidden. It is possible to install a hanging cord in the rail, anywhere you like in the room. Since the rail itself isn't visible, the hanging cords are suspended directly from the ceiling. If you choose the transparent perlon hanging cords for the rail, you will have the most discreet picture hanging system at your disposal. Using the Shadowline ceiling system means you will always have a guarantee of smooth, clean walls, and the flexibility to decorate them any way you like, without the need for tools.

### RAIL



SHADOWLINE DRYWALL  
RAL 9016

ARTICLE NO. 250 cm FOR USE WITH DRYWALL 10 mm 05.08400

ARTICLE NO. 250 cm FOR USE WITH DRYWALL 13 mm 05.08420

### FASTENER MATERIAL

FISCHER UX 5X30 R UNIVERSAL PLUG 5 mm 9.4931

SCREW 3,5 mm X 45 mm 9.4929

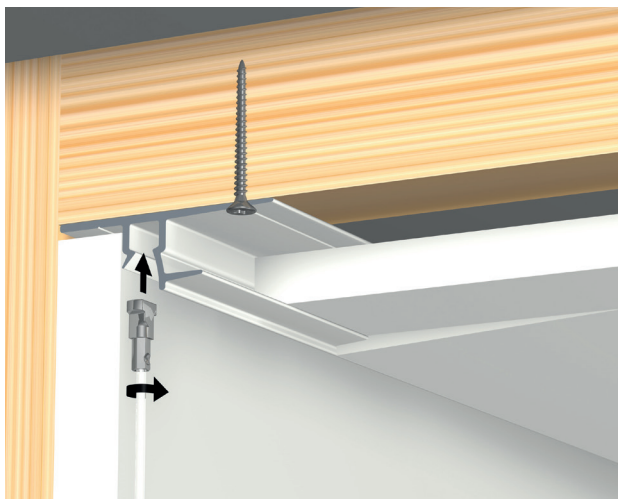
RAIL IS SUPPLIED WITHOUT HOLES



CEILING SYSTEMS - INTEGRATED

# SHADOWLINE

SHADOWLINE DRYWALL (FIXATION DRYWALL)



SHADOWLINE MASONRY (FIXATION STONE WALLS)

